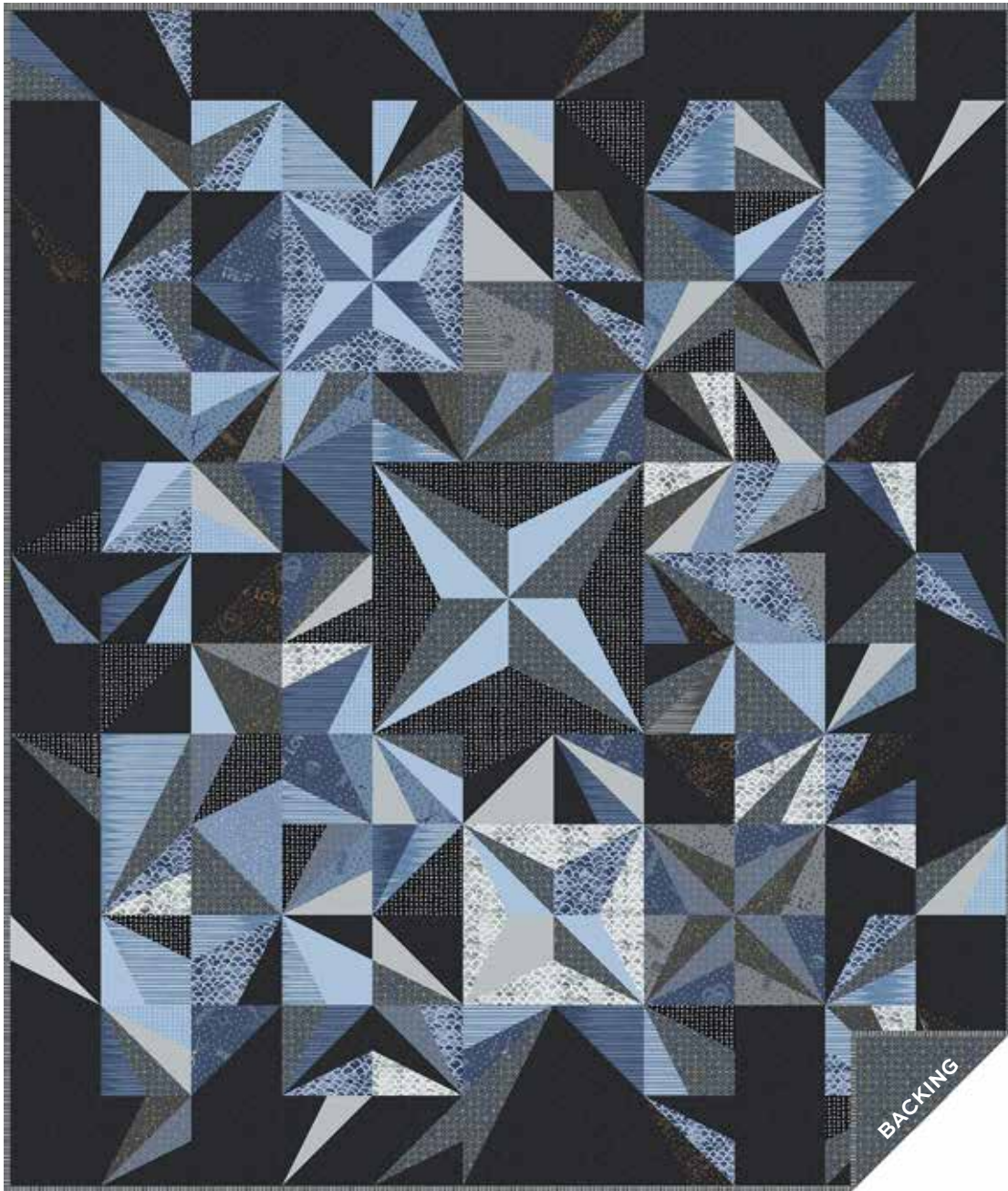


# Almost Blue

LIBS ELLIOTT



Exploding Stars Quilt  
designed by  
**Libs Elliott**

Quilt Size: **77" x 91"**

[andoverfabrics.com](http://andoverfabrics.com)

## About Almost Blue

Almost Blue is a collection of quilting weight cottons that reflect Libs' love for denim like that favorite pair of jeans and the way they wear and gather stories and become personal over time. The denim textures are an invitation for the maker to cut, stitch and embellish it further to make it her own. A little of me, a little of you, Almost Blue.

andover

•  
•  
• **makower uk**  
• *The Henley Studio*

Free Pattern Download Available

1384 Broadway New York, NY 10018  
Tel. (800) 223-5678 • [andoverfabrics.com](http://andoverfabrics.com)

# Exploding Stars Quilt



Introducing Andover Fabrics new collection: **ALMOST BLUE** by Libs Elliott

Quilt designed by Libs Elliott

Quilt finishes 77" x 91"

110 Blocks: 7" x 7"

4 Blocks: 10½" x 10½"

*A design that is sure to appeal to the contemporary quiltmaker, this stunning quilt will inspire your creativity. Although there is a somewhat random placement of blocks, there is a controlled symmetry to the overall design, with the larger blocks forming a focal point in the center. The neutral black and white prints are the perfect background for the cool blues.*

## Cutting Directions

**Note:** Read assembly directions before cutting patches. All measurements are cut sizes and include ¼" seam allowances. WOF designates the width of fabric from selvedge to selvedge (approximately 42" wide).

### Black Dot

Cut 4 Template F  
Cut 4 Template F reversed  
Cut other patches as needed (read Step 1)

### Navy/Gold

Cut (4) Template E reversed  
Cut other patches as needed

### Black

Cut (14) squares 7⅞" x 7⅞", cut in half diagonally to make 28 half-square triangles  
Cut (24) squares 7½" x 7½"  
Cut other patches as needed

### Lt. Blue

Cut (4) Template E  
Cut other patches as needed

### Black Stripe

Cut (9) strips 2½" x WOF for binding  
Cut patches as needed

### 13 Prints

Cut patches as needed (read Step 1)

### Backing

Cut (2) panels 40" x 99", pieced to fit quilt top with overlap on all sides

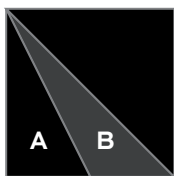
## Fabric Requirements

		Yardage	Fabric
<b>Black Dot</b>	blocks	1 yard	9350-K
<b>Navy/Gold</b>	blocks	1¾ yards	9351-MG
<b>Black</b>	blocks	2½ yards	9354-K
<b>Lt. Blue</b>	blocks	1 yard	9354-L
<b>*Black Stripe</b>	blocks	1¼ yards	9349-K
<b>13 Prints</b>	blocks	½ yard each	
	9348-B	9348-K	9348-MC
	9348-MO	9349-B	9349-BL
	9350-BL	9351-MO	9352-B
	9352-C	9353-MC	9353-MG
	9354-C		
<b>Backing</b>		5¾ yards	9351-MG
*includes binding			

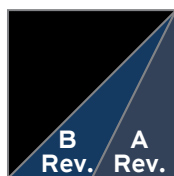
## Making the Quilt

1. The only blocks that have designated fabrics are the four Block 8 in the quilt center. Feel free to arrange fabrics as you wish in the other blocks. Note that all blocks along the outside edges of the quilt use the black fabric in parts of each block. For accurate piecing, mark sewing lines on the wrong side of the angled patches. When you join patches, line up the sewing lines.
2. Referring to the block diagrams, make the blocks in the numbers shown. Feel free to alter the number of blocks to make more of some, less of others. Distribute the blue fabrics throughout the quilt. If you wish to duplicate the quilt, begin with the top left block. Cut patches in the fabrics shown, piece the block, and cross out that block on the quilt diagram. The block should measure 7½" from raw edge to raw edge. Be sure that your blocks are this size. Continue to make all the blocks for Row 1. Repeat with each row.
3. Referring to the Block 8 diagram, make 4 Block 8. They should measure 11" from raw edge to raw edge. Join them to make a 21½" square.
4. Referring to the Quilt Diagram, arrange the blocks plus the large Block 8 unit on a design wall or large flat surface. Join the blocks in rows, being careful to keep the blocks in the intended order. Join the rows.

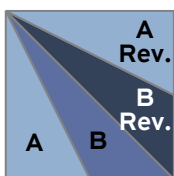
# Exploding Stars Quilt



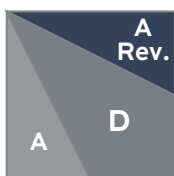
**Block 1**  
Make 9



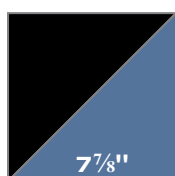
**Block 2**  
Make 15



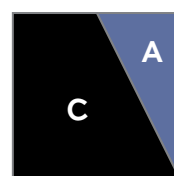
**Block 3**  
Make 53



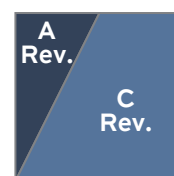
**Block 4**  
Make 13



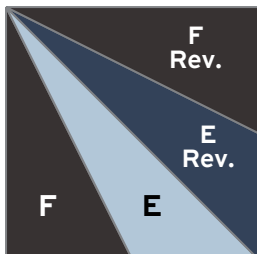
**Block 5**  
Make 15



**Block 6**  
Make 2



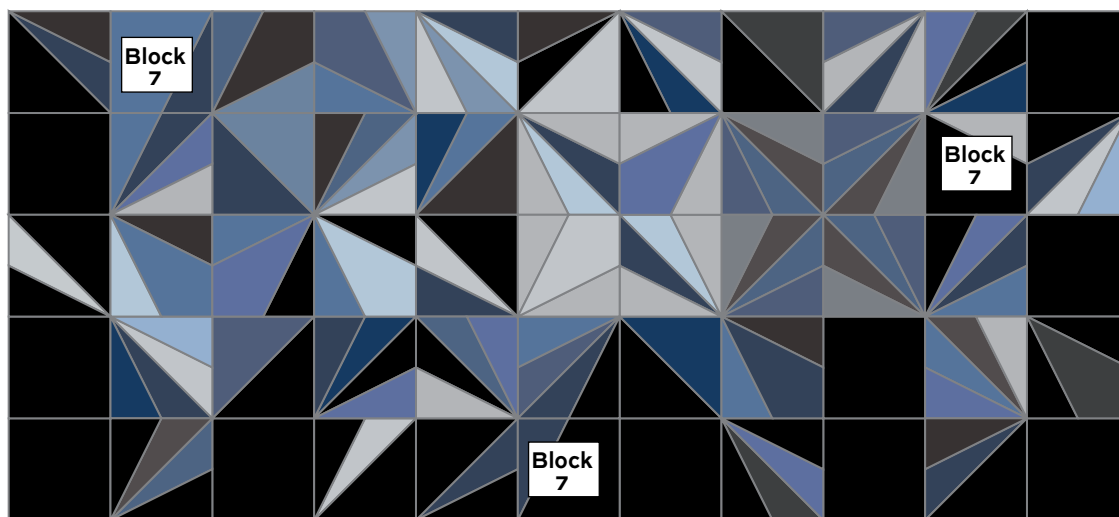
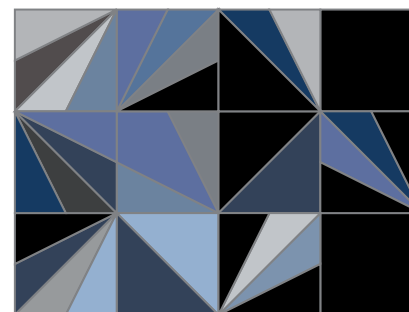
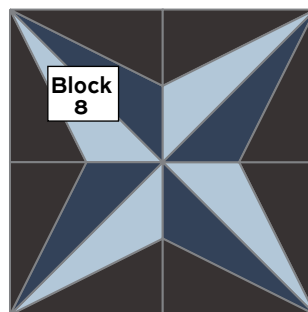
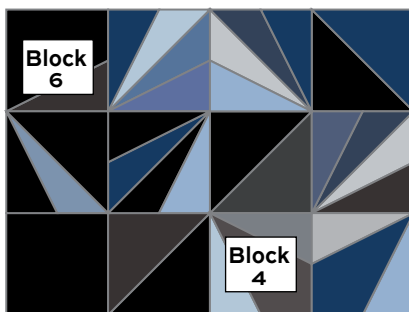
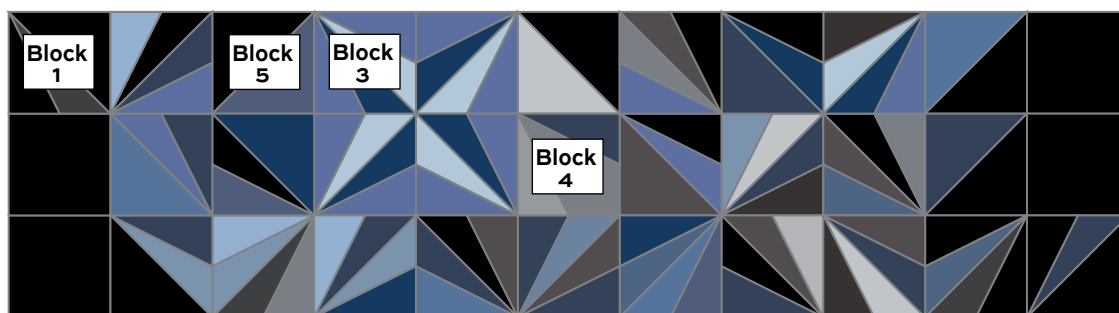
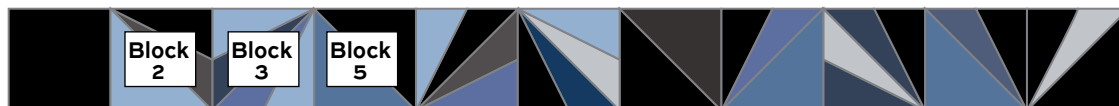
**Block 7**  
Make 3



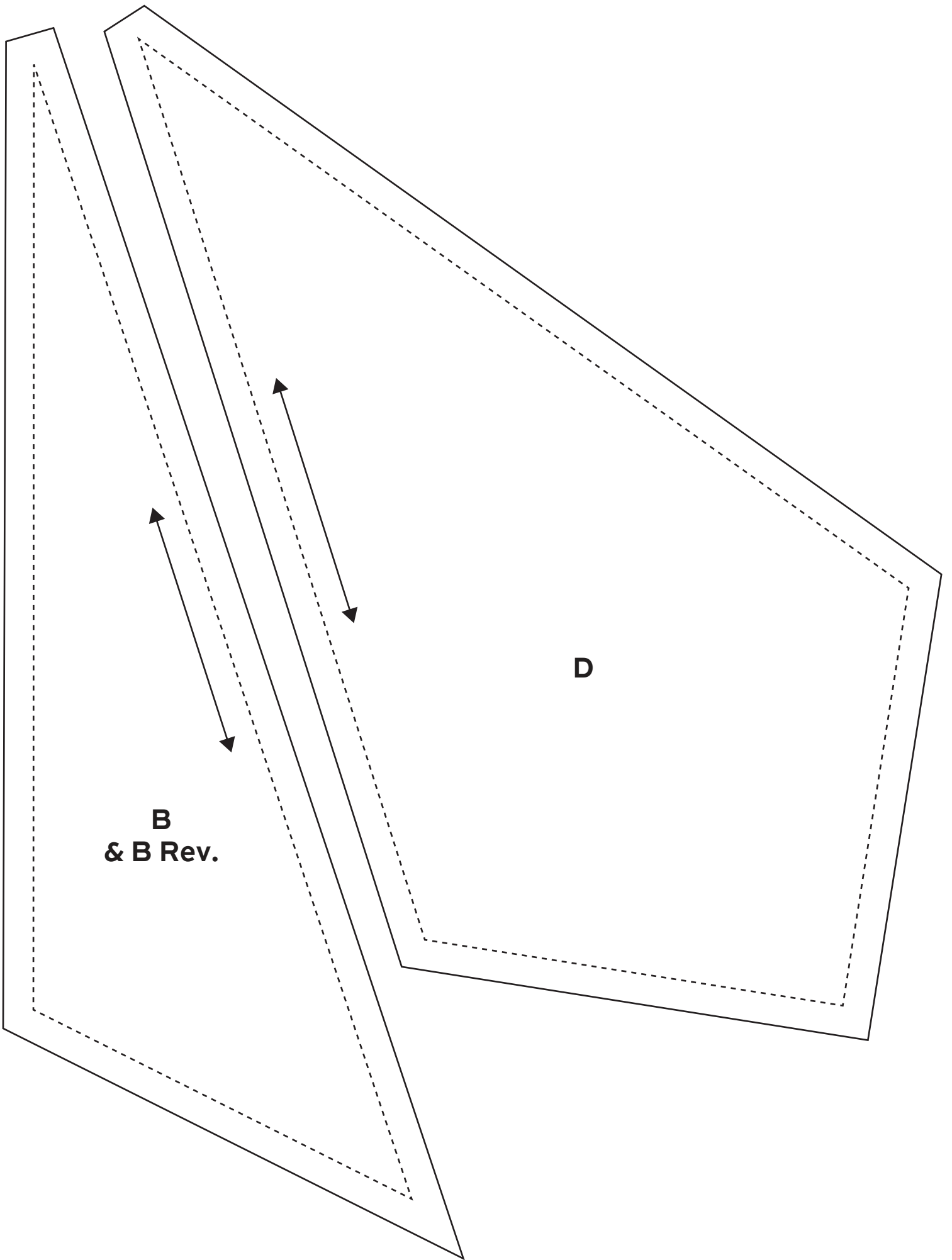
**Block 8 - Make 4**

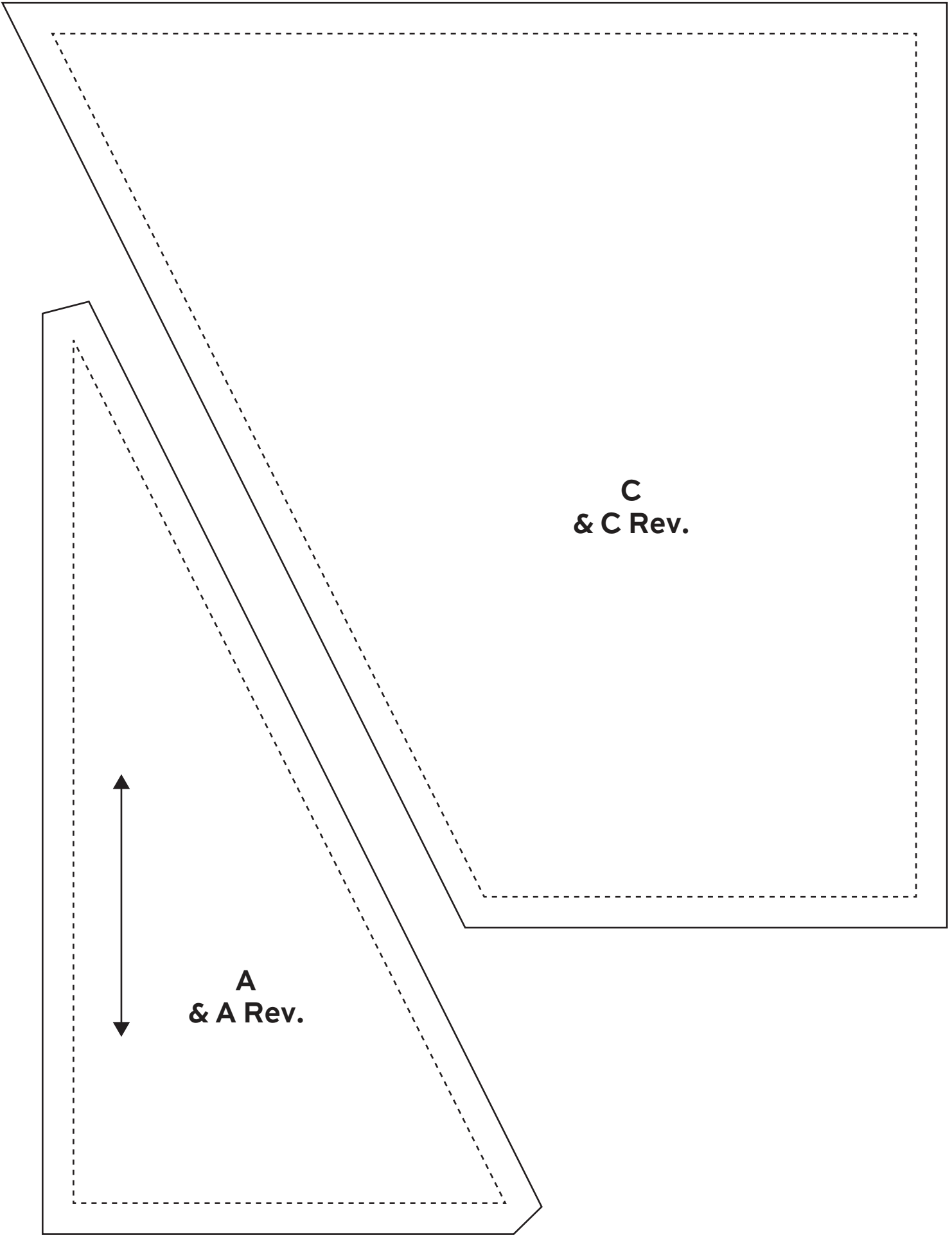
## Finishing the Quilt

5. Layer the quilt with batting and backing and baste. Quilt in the ditch around block patches or quilt an overall motif. Bind to finish the quilt.



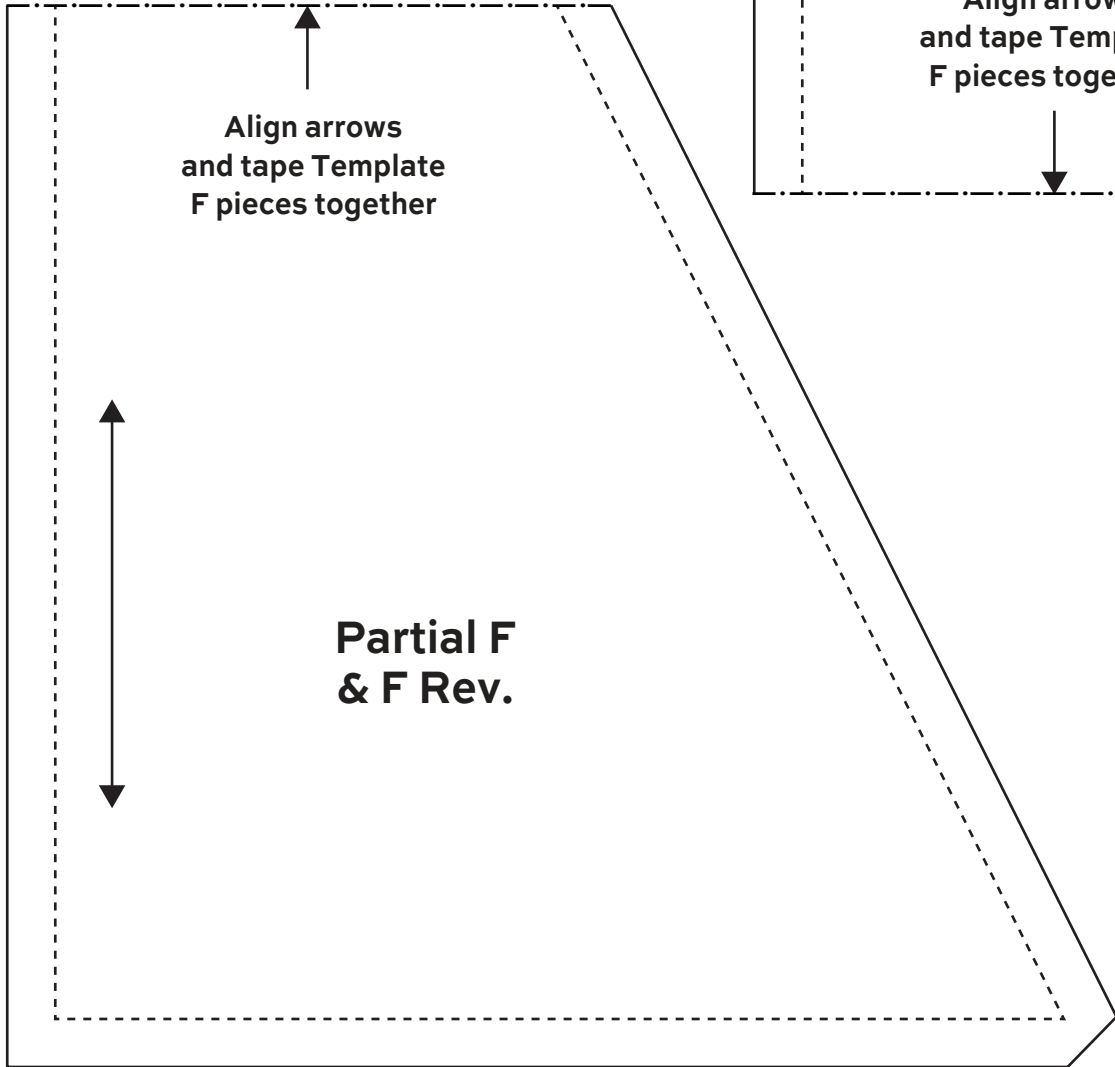
**Quilt Diagram**



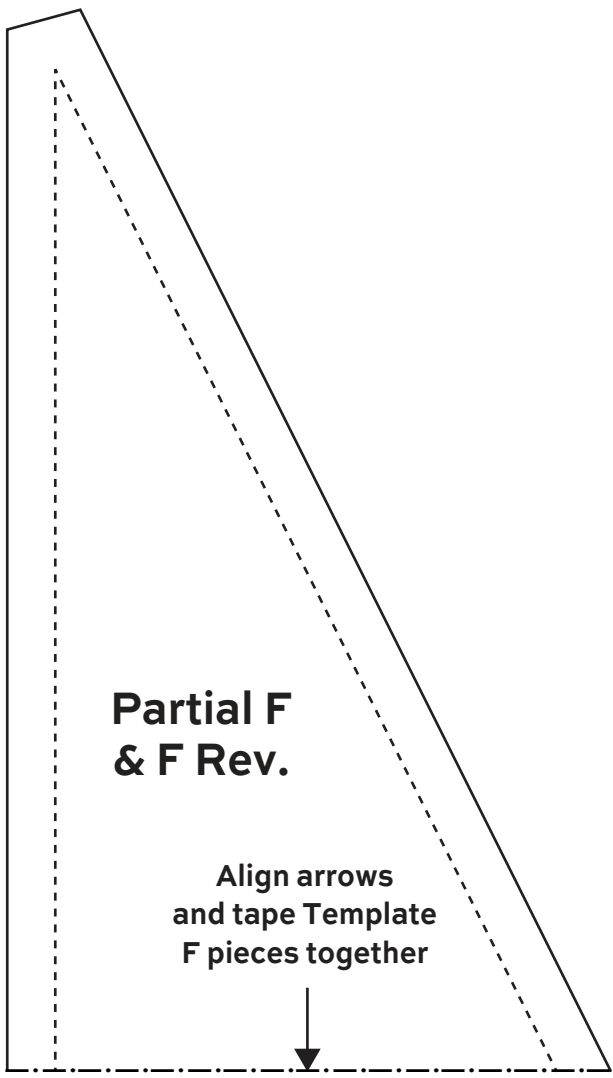


**A  
& A Rev.**

**C  
& C Rev.**

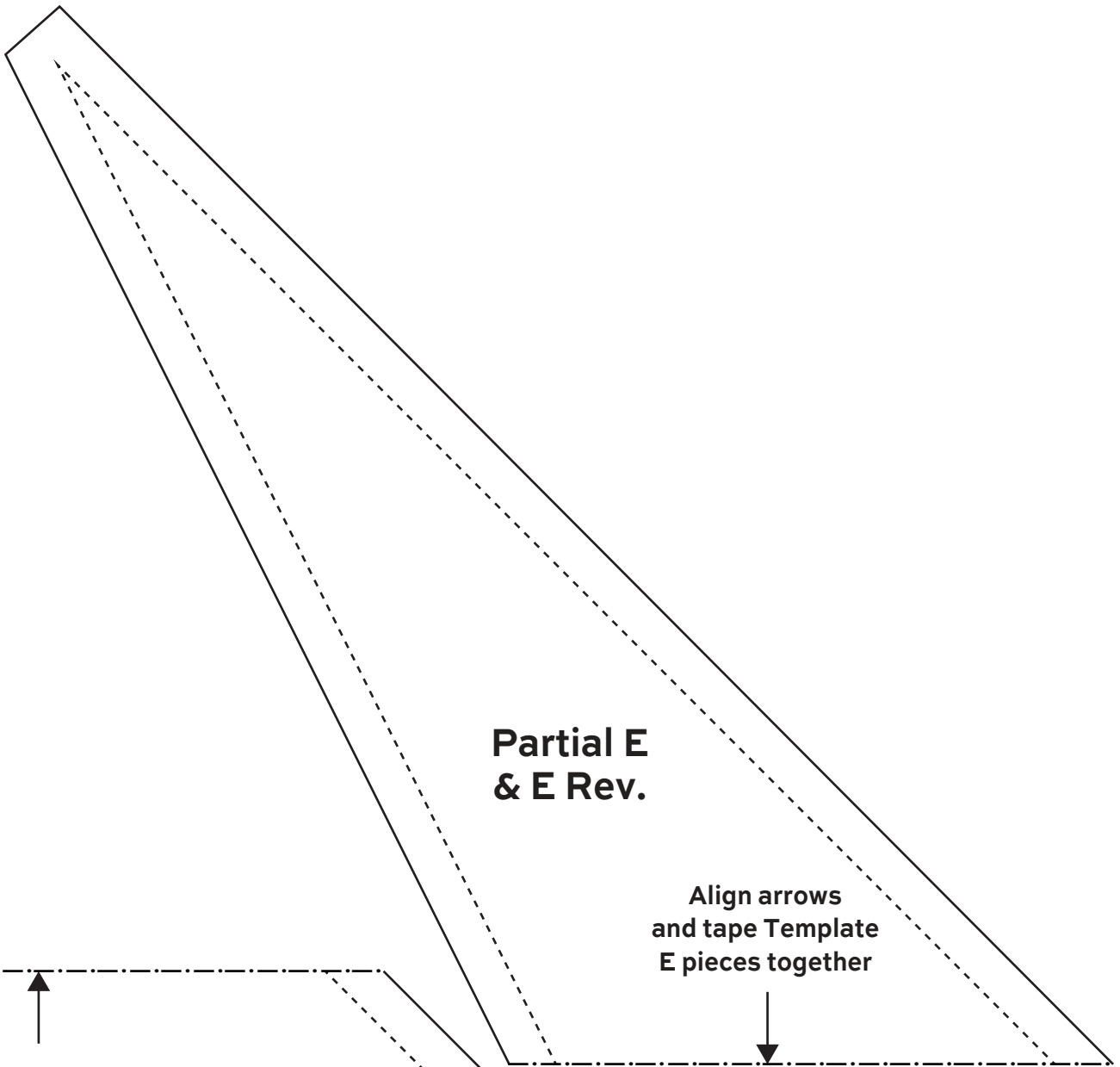


Align arrows  
and tape Template  
F pieces together



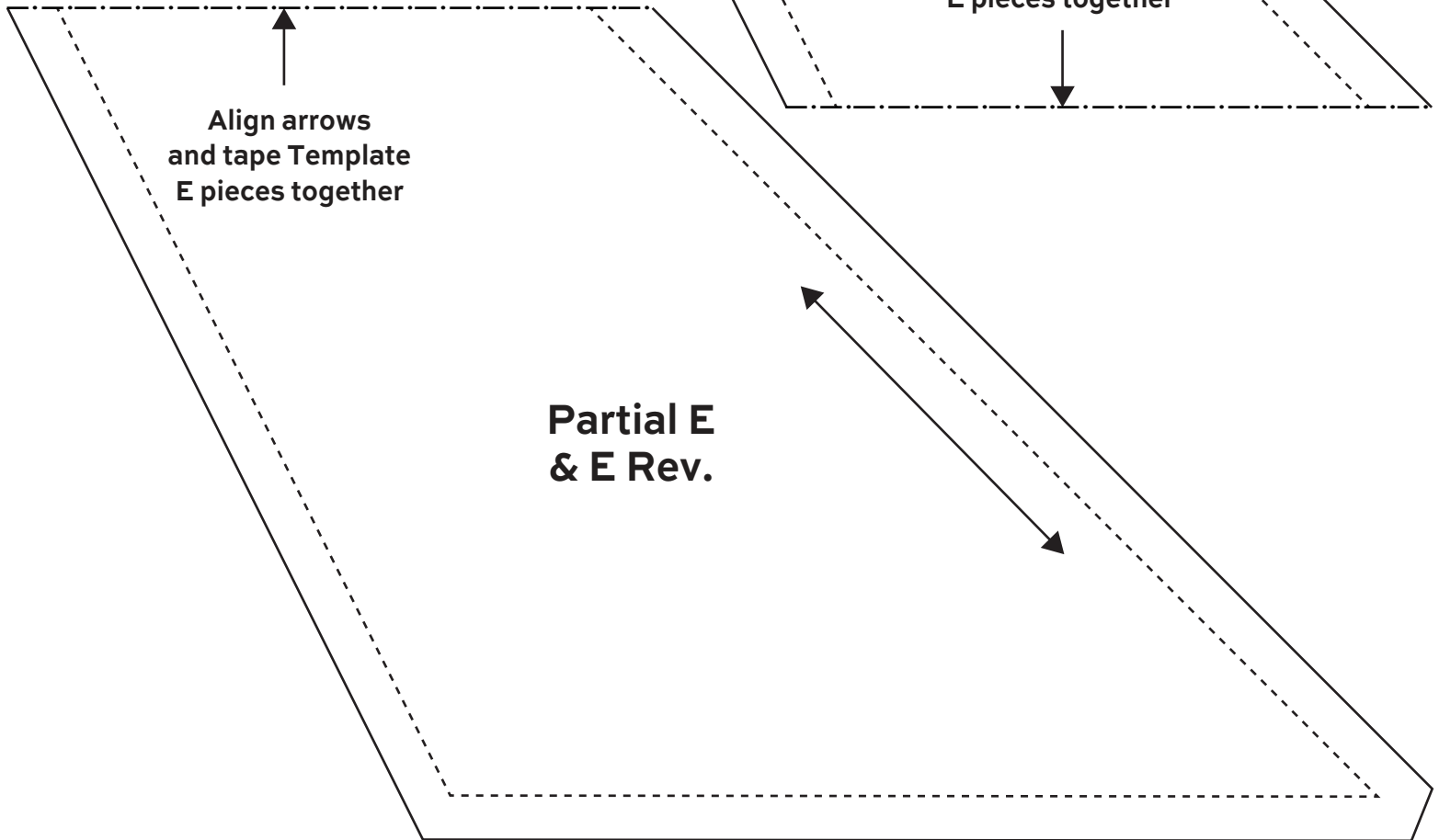
Align arrows  
and tape Template  
F pieces together





**Partial E  
& E Rev.**

**Align arrows  
and tape Template  
E pieces together**



**Align arrows  
and tape Template  
E pieces together**

**Partial E  
& E Rev.**

**Align arrows  
and tape Template  
E pieces together**

# Almost Blue

BY LIBS ELLIOTT



9348-B\*



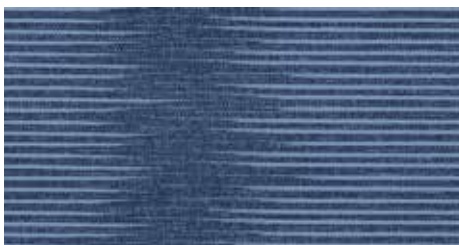
9348-K\*



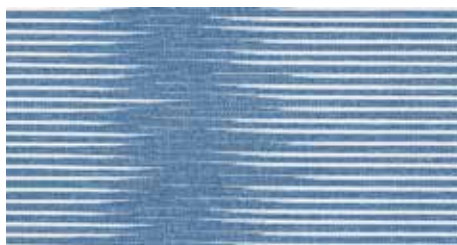
9348-MC\*



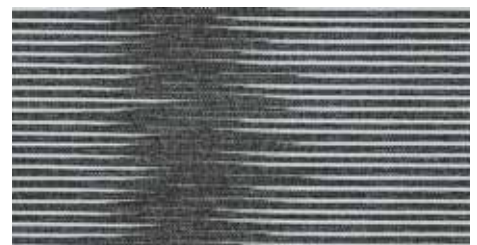
9348-MO\*



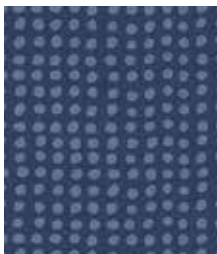
9349-B\*



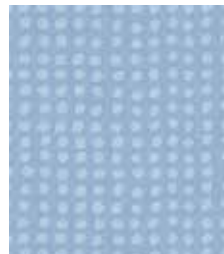
9349-BL\*



9349-K\*



9350-B



9350-BL\*



9350-K\*



9351-MC



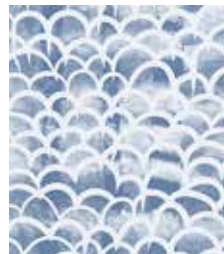
9351-MG\*



9351-MO\*



9352-B\*



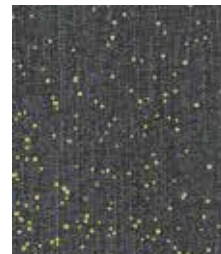
9352-BL



9352-C\*



9353-MC\*



9353-MG\*



9353-MO



9354-B



9354-BL



9354-C\*



9354-K\*



9354-L\*

\*Indicates fabrics used in quilt pattern. Fabrics shown are 25% of actual size.

andover



[makower.uk](http://makower.uk)

Free Pattern Download Available

1384 Broadway New York, NY 10018  
Tel. (800) 223-5678 • [andoverfabrics.com](http://andoverfabrics.com)